

WEEKLY UPDATE WITH PHOTOS W/C 22nd April 2025

- Flooring is complete from the ground to eighth floors, with the exception of the nursery.
- Decoration is complete except for the nursery. Ground floor plot decorations are now complete with communal areas also complete, with snagging in progress.
- Main entrance doors are now powered and magnet locks are operational. Snagging to the corridors is in progress.
- Canopies are complete.
- The nursery ceiling is progressing well. Boarding is complete and suspended ceiling is in progress.
- Carpentry finals are complete with snagging in progress.
- Kitchen installation is complete. There is one kitchen to be installed within the nursery.
- Cycle and bin stores have now been completed.
- The numbering of the parking bays to Zone 2 is complete. White lining is 50% complete to the main car park.
- Remainder of the block paving is now complete with the exception of the welfare area and cabins are booked to be removed
- Soft landscaping is in progress.
- The rainwater pipes have been installed and are connected to the ground floor outlets.
- The S278 street works to Felix Road are due to be start on Monday 28th April 2025. We will try and keep disruption to a minimum and apologise for any inconvenience.
- The site will not be open for the entire Easter weekend Fri 18/04/2025 to Mon 21/04/2025 inclusive.




Tony Johnson
Senior Site Manager

Contact our Social Value and Community Team

 0800 032 6760 (free phone) 8am to 8pm, seven days a week

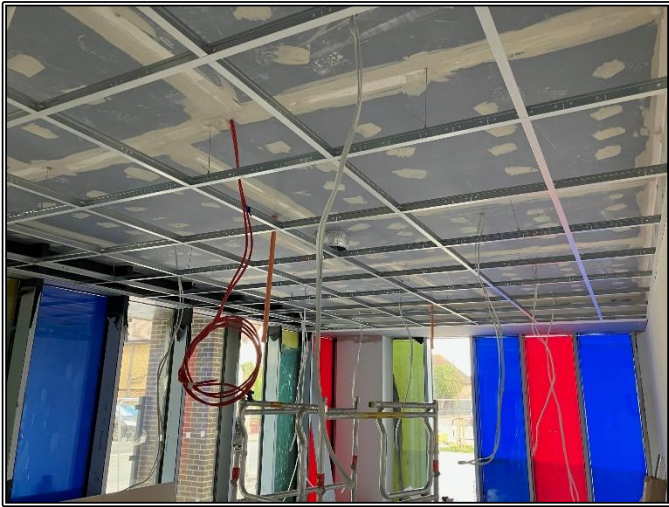
 residents@hill.co.uk

 The Powder House
Gunpowder Mill
Powdermill Lane
Waltham Abbey
Essex, EN9 1BN



Thamesview House Bulletin

17th April 2025



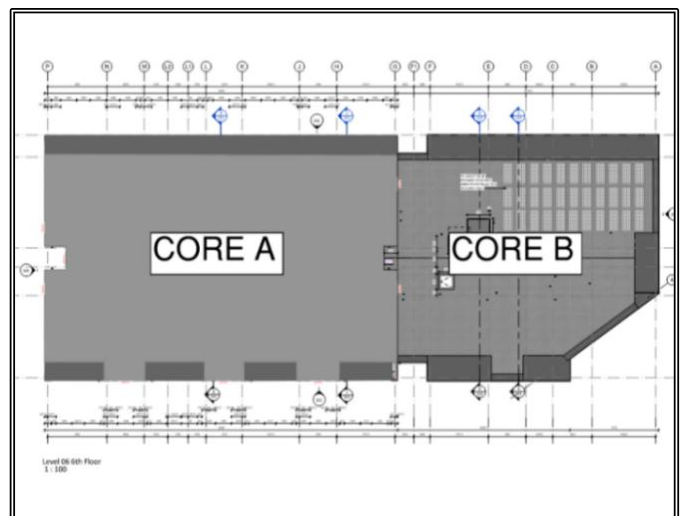
Nursery Secondary Ceiling Grid



White Lining to Car Park



S278 Works Road Signage



Core Identification



Tony Johnson
Senior Site Manager

Contact our Social Value and Community Team

☎ 0800 032 6760 (free phone) 8am to 8pm, seven days a week

✉ residents@hill.co.uk

✍ The Powder House
Gunpowder Mill
Powdermill Lane
Waltham Abbey
Essex, EN9 1BN

**CONSIDERATE
CONSTRUCTORS
SCHEME**

